

Simulador de Depreciação WEB - MEC

PRESIDENTE DA REPÚBLICA

Luiz Inácio Lula da Silva

MINISTRO DA EDUCAÇÃO

Fernando Haddad

SECRETÁRIO EXECUTIVO

Jose Henrique Paim Fernandes

SUBSECRETÁRIO DE PLANEJAMENTO ORÇAMENTO

Paulo Eduardo Nunes de Moura Rocha

COORDENADORA GERAL DE FINANÇAS

Iara Ferreira Pinheiro

COORDENAÇÃO DE PROGRAMAÇÃO E ACOMPANHAMENTO FINANCEIRO

João Luiz da Silva

Shirley Jackcely dos Santos Gomes

Wesley Washington Lourenço Figueredo

Ricardo Ferreira Ardenghi

Paulo Cesar Alves de Santana

Ely Mendes de Oliveira

COORDENAÇÃO DE CONTABILIDADE E CUSTOS

Nucia Ferreira Silva

Ana Karina da Silva Santos

Maria Claudia Simões Nogueira

Danillo Teixeira de Souza

Erildo Alves Machado

João Oldiniz Pinheiro

Mônica Cristina da Cunha Ribeiro

Eliana Namie Kato

SUBSECRETÁRIA DE ASSUNTOS ADMINISTRATIVOS

Valéria Grilanda Rodrigues Paiva

COORDENAÇÃO GERAL DE RECURSOS LOGÍSTICOS

Cláudio Martins Neiva Monteiro

Robson Pereira Batista

Maurício de Almeida Sousa

Laudise de Araújo Souto Pereira

DIRETORIA DE TECNOLOGIA DA INFORMAÇÃO

José Eduardo Bueno de Oliveira

Cristiano Cabral



Coordenação-Geral de
Finanças

Subsecretaria
de Planejamento e

Ministério
da Educação



Base Legal

- ✓ Lei nº. 4.320/1964;
- ✓ Lei Complementar nº. 101/2000;
- ✓ Lei nº. 10.180/2001;
- ✓ Decreto nº. 99.658/1990;
- ✓ Portaria STN nº. 467/2009;
- ✓ Manual de Contabilidade Aplicado ao Setor Público;
- ✓ Normas Brasileiras de Contabilidade Aplicadas ao Setor Público;
- ✓ Manual SIAFI (Macrofunção 02.03.30 e suas alterações)



Simulador de Depreciação WEB - MEC

Guia do Usuário

Tela Inicial

Endereço Eletrônico: simec.mec.gov.br/webservice/depreciacao/client.php

The screenshot shows a web browser window with the URL simec.mec.gov.br/webservice/depreciacao/client.php. The page title is "SIMEC". Below the title, there is a heading: "Reavaliação, Redução a valor recuperável, Depreciação, Amortização e Exaustão na administração direta da União, suas Autarquias e Fundações". A text box states: "O arquivo a ser enviado deve estar num formato padrão. Este formato consiste nos seguintes dados:". Below this, there is a table with the following fields and descriptions:

Campos	Descrição
UNIDADE ORÇAMENTÁRIA	Código da unidade orçamentária
UNIDADE GESTORA	Código da unidade gestora
CÓDIGO DO PRODUTO	Código de controle interno de cada instituição utilizado para controlar o tipo de produto
NÚMERO DE TOMBAMENTO*	Nesse caso, se for colocado o RGP, ele deve ter a quantidade obrigatória de 1 (um). Caso contrário, não é um campo obrigatório.
CONTA PATRIMONIAL	Padronizado dentre algumas áreas, define a taxa de depreciação do produto
DATA DE TOMBAMENTO	Data de lançamento do bem no SIAFI, no formato dd/mm/aaaa
QUANTIDADE	Quantidade de produtos a serem depreciados
VALOR DE ENTRADA	Valor total dos produtos a serem depreciados, levando em conta a quantidade

At the bottom, a note states: "O arquivo deve estar no formato csv, separados por ";" ponto-e-virgula."

Relação de Contas Patrimoniais

Tipos de contas patrimoniais	
Código	Descrição
14212.04.00	APARELHOS DE MEDICAO E ORIENTACAO
14212.06.00	APARELHOS E EQUIPAMENTO DE COMUNICACAO
14212.08.00	APAR., EQUIP.E UTENS.MED.,ODONT.,LABOR.E HOSP.
14212.10.00	APARELHOS E EQUIP. DE PROTECCAO E DEFESA

Seletor de Arquivo (formato .csv)

Arquivo : Nenhum arquivo selecionado

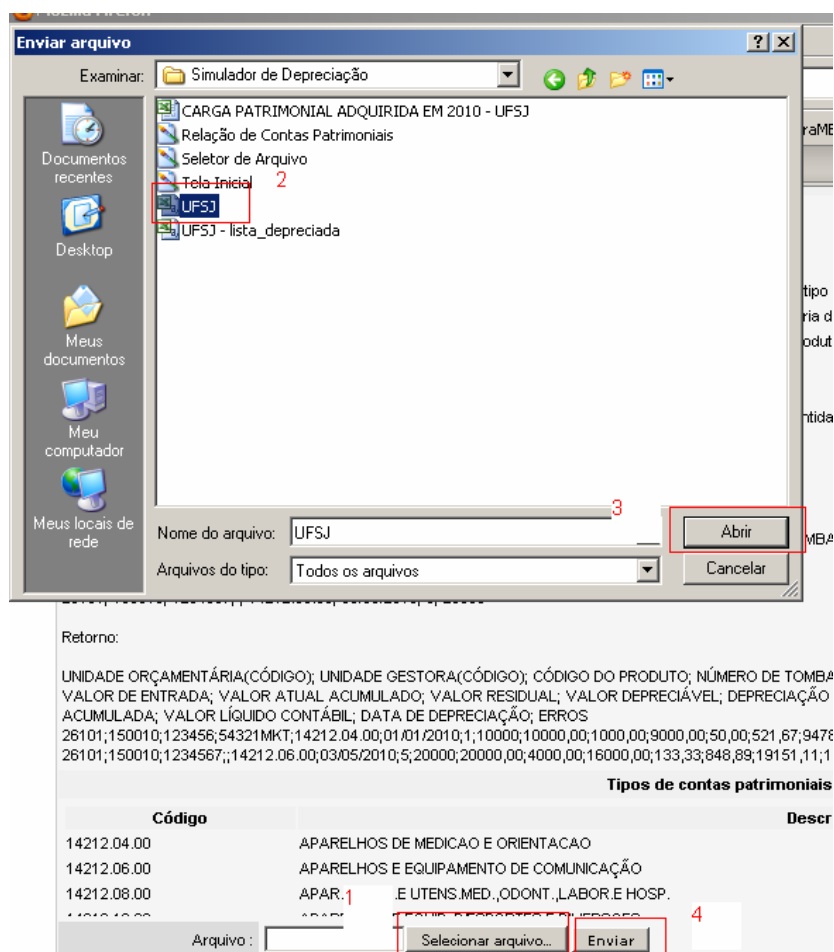
Observações:

- Código do produto é opcional. Quando inexistir utilizar na lista de dados o campo em branco. Ver exemplo abaixo.
- Formato do arquivo em .csv: utilizar o Bloco de Notas (*Notepad*) → Menu Arquivo → Salvar como. Informar o nome do arquivo. Exemplo: patrimônio.csv
- Lista de Dados (formato padrão) Exemplo:
26285;154069;;B10056897-X;14212.04.00;26/01/2010;1;111



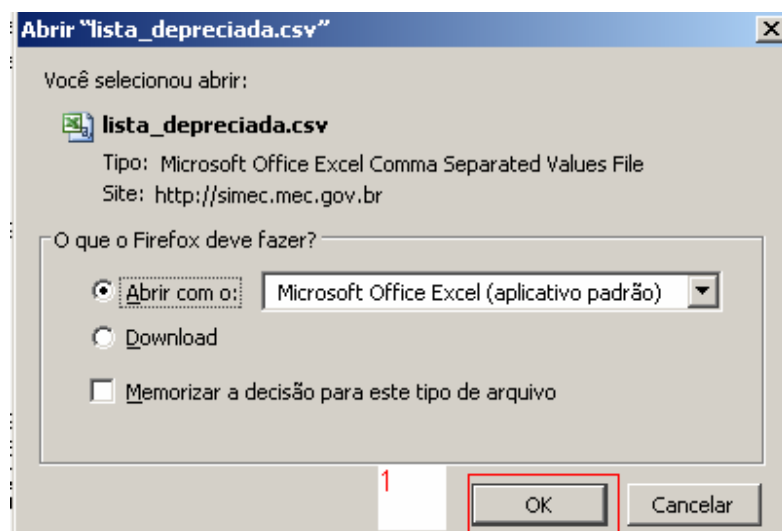
Processo de Seleção

- 1 – Clicar no Botão “Selecionar arquivo”
- 2 – Selecionar o arquivo
- 3 – Clicar no Botão “Abrir”
- 4 – Clicar no Botão “Enviar”



Arquivo de Retorno – Lista Depreciada

1 – Clicar no Botão “Ok”



Lista Depreciada - Excel

Tratamento de Dados - Classificar

Menu Dados → Classificar

Microsoft Excel - lista_depreciada [Somente leitura]

Arquivo, Editar, Exibir, Inserir, Formatar, Ferramentas, Dados, Janela, Ajuda

Classificar...

10, Arial, 100%

1, 2, 3, 4, 5, 6, 7, 8, 9, 10, 11, 12, 13, 14, 15, 16, 17, 18, 19, 20, 21, 22, 23, 24, 25, 26, 27, 28, 29, 30, 31, 32, 33, 34, 35, 36, 37, 38, 39, 40, 41, 42, 43, 44, 45, 46, 47, 48, 49, 50, 51, 52, 53, 54, 55, 56, 57, 58, 59, 60, 61, 62, 63, 64, 65, 66, 67, 68, 69, 70, 71, 72, 73, 74, 75, 76, 77, 78, 79, 80, 81, 82, 83, 84, 85, 86, 87, 88, 89, 90, 91, 92, 93, 94, 95, 96, 97, 98, 99, 100

1, 2, 3, 4, 5, 6, 7, 8, 9, 10, 11, 12, 13, 14, 15, 16, 17, 18, 19, 20, 21, 22, 23, 24, 25, 26, 27, 28, 29, 30, 31, 32, 33, 34, 35, 36, 37, 38, 39, 40, 41, 42, 43, 44, 45, 46, 47, 48, 49, 50, 51, 52, 53, 54, 55, 56, 57, 58, 59, 60, 61, 62, 63, 64, 65, 66, 67, 68, 69, 70, 71, 72, 73, 74, 75, 76, 77, 78, 79, 80, 81, 82, 83, 84, 85, 86, 87, 88, 89, 90, 91, 92, 93, 94, 95, 96, 97, 98, 99, 100

1, 2, 3, 4, 5, 6, 7, 8, 9, 10, 11, 12, 13, 14, 15, 16, 17, 18, 19, 20, 21, 22, 23, 24, 25, 26, 27, 28, 29, 30, 31, 32, 33, 34, 35, 36, 37, 38, 39, 40, 41, 42, 43, 44, 45, 46, 47, 48, 49, 50, 51, 52, 53, 54, 55, 56, 57, 58, 59, 60, 61, 62, 63, 64, 65, 66, 67, 68, 69, 70, 71, 72, 73, 74, 75, 76, 77, 78, 79, 80, 81, 82, 83, 84, 85, 86, 87, 88, 89, 90, 91, 92, 93, 94, 95, 96, 97, 98, 99, 100

1, 2, 3, 4, 5, 6, 7, 8, 9, 10, 11, 12, 13, 14, 15, 16, 17, 18, 19, 20, 21, 22, 23, 24, 25, 26, 27, 28, 29, 30, 31, 32, 33, 34, 35, 36, 37, 38, 39, 40, 41, 42, 43, 44, 45, 46, 47, 48, 49, 50, 51, 52, 53, 54, 55, 56, 57, 58, 59, 60, 61, 62, 63, 64, 65, 66, 67, 68, 69, 70, 71, 72, 73, 74, 75, 76, 77, 78, 79, 80, 81, 82, 83, 84, 85, 86, 87, 88, 89, 90, 91, 92, 93, 94, 95, 96, 97, 98, 99, 100

1, 2, 3, 4, 5, 6, 7, 8, 9, 10, 11, 12, 13, 14, 15, 16, 17, 18, 19, 20, 21, 22, 23, 24, 25, 26, 27, 28, 29, 30, 31, 32, 33, 34, 35, 36, 37, 38, 39, 40, 41, 42, 43, 44, 45, 46, 47, 48, 49, 50, 51, 52, 53, 54, 55, 56, 57, 58, 59, 60, 61, 62, 63, 64, 65, 66, 67, 68, 69, 70, 71, 72, 73, 74, 75, 76, 77, 78, 79, 80, 81, 82, 83, 84, 85, 86, 87, 88, 89, 90, 91, 92, 93, 94, 95, 96, 97, 98, 99, 100

1, 2, 3, 4, 5, 6, 7, 8, 9, 10, 11, 12, 13, 14, 15, 16, 17, 18, 19, 20, 21, 22, 23, 24, 25, 26, 27, 28, 29, 30, 31, 32, 33, 34, 35, 36, 37, 38, 39, 40, 41, 42, 43, 44, 45, 46, 47, 48, 49, 50, 51, 52, 53, 54, 55, 56, 57, 58, 59, 60, 61, 62, 63, 64, 65, 66, 67, 68, 69, 70, 71, 72, 73, 74, 75, 76, 77, 78, 79, 80, 81, 82, 83, 84, 85, 86, 87, 88, 89, 90, 91, 92, 93, 94, 95, 96, 97, 98, 99, 100

1, 2, 3, 4, 5, 6, 7, 8, 9, 10, 11, 12, 13, 14, 15, 16, 17, 18, 19, 20, 21, 22, 23, 24, 25, 26, 27, 28, 29, 30, 31, 32, 33, 34, 35, 36, 37, 38, 39, 40, 41, 42, 43, 44, 45, 46, 47, 48, 49, 50, 51, 52, 53, 54, 55, 56, 57, 58, 59, 60, 61, 62, 63, 64, 65, 66, 67, 68, 69, 70, 71, 72, 73, 74, 75, 76, 77, 78, 79, 80, 81, 82, 83, 84, 85, 86, 87, 88, 89, 90, 91, 92, 93, 94, 95, 96, 97, 98, 99, 100

1, 2, 3, 4, 5, 6, 7, 8, 9, 10, 11, 12, 13, 14, 15, 16, 17, 18, 19, 20, 21, 22, 23, 24, 25, 26, 27, 28, 29, 30, 31, 32, 33, 34, 35, 36, 37, 38, 39, 40, 41, 42, 43, 44, 45, 46, 47, 48, 49, 50, 51, 52, 53, 54, 55, 56, 57, 58, 59, 60, 61, 62, 63, 64, 65, 66, 67, 68, 69, 70, 71, 72, 73, 74, 75, 76, 77, 78, 79, 80, 81, 82, 83, 84, 85, 86, 87, 88, 89, 90, 91, 92, 93, 94, 95, 96, 97, 98, 99, 100

1, 2, 3, 4, 5, 6, 7, 8, 9, 10, 11, 12, 13, 14, 15, 16, 17, 18, 19, 20, 21, 22, 23, 24, 25, 26, 27, 28, 29, 30, 31, 32, 33, 34, 35, 36, 37, 38, 39, 40, 41, 42, 43, 44, 45, 46, 47, 48, 49, 50, 51, 52, 53, 54, 55, 56, 57, 58, 59, 60, 61, 62, 63, 64, 65, 66, 67, 68, 69, 70, 71, 72, 73, 74, 75, 76, 77, 78, 79, 80, 81, 82, 83, 84, 85, 86, 87, 88, 89, 90, 91, 92, 93, 94, 95, 96, 97, 98, 99, 100

1, 2, 3, 4, 5, 6, 7, 8, 9, 10, 11, 12, 13, 14, 15, 16, 17, 18, 19, 20, 21, 22, 23, 24, 25, 26, 27, 28, 29, 30, 31, 32, 33, 34, 35, 36, 37, 38, 39, 40, 41, 42, 43, 44, 45, 46, 47, 48, 49, 50, 51, 52, 53, 54, 55, 56, 57, 58, 59, 60, 61, 62, 63, 64, 65, 66, 67, 68, 69, 70, 71, 72, 73, 74, 75, 76, 77, 78, 79, 80, 81, 82, 83, 84, 85, 86, 87, 88, 89, 90, 91, 92, 93, 94, 95, 96, 97, 98, 99, 100

1, 2, 3, 4, 5, 6, 7, 8, 9, 10, 11, 12, 13, 14, 15, 16, 17, 18, 19, 20, 21, 22, 23, 24, 25, 26, 27, 28, 29, 30, 31, 32, 33, 34, 35, 36, 37, 38, 39, 40, 41, 42, 43, 44, 45, 46, 47, 48, 49, 50, 51, 52, 53, 54, 55, 56, 57, 58, 59, 60, 61, 62, 63, 64, 65, 66, 67, 68, 69, 70, 71, 72, 73, 74, 75, 76, 77, 78, 79, 80, 81, 82, 83, 84, 85, 86, 87, 88, 89, 90, 91, 92, 93, 94, 95, 96, 97, 98, 99, 100

1, 2, 3, 4, 5, 6, 7, 8, 9, 10, 11, 12, 13, 14, 15, 16, 17, 18, 19, 20, 21, 22, 23, 24, 25, 26, 27, 28, 29, 30, 31, 32, 33, 34, 35, 36, 37, 38, 39, 40, 41, 42, 43, 44, 45, 46, 47, 48, 49, 50, 51, 52, 53, 54, 55, 56, 57, 58, 59, 60, 61, 62, 63, 64, 65, 66, 67, 68, 69, 70, 71, 72, 73, 74, 75, 76, 77, 78, 79, 80, 81, 82, 83, 84, 85, 86, 87, 88, 89, 90, 91, 92, 93, 94, 95, 96, 97, 98, 99, 100

1, 2, 3, 4, 5, 6, 7, 8, 9, 10, 11, 12, 13, 14, 15, 16, 17, 18, 19, 20, 21, 22, 23, 24, 25, 26, 27, 28, 29, 30, 31, 32, 33, 34, 35, 36, 37, 38, 39, 40, 41, 42, 43, 44, 45, 46, 47, 48, 49, 50, 51, 52, 53, 54, 55, 56, 57, 58, 59, 60, 61, 62, 63, 64, 65, 66, 67, 68, 69, 70, 71, 72, 73, 74, 75, 76, 77, 78, 79, 80, 81, 82, 83, 84, 85, 86, 87, 88, 89, 90, 91, 92, 93, 94, 95, 96, 97, 98, 99, 100

1, 2, 3, 4, 5, 6, 7, 8, 9, 10, 11, 12, 13, 14, 15, 16, 17, 18, 19, 20, 21, 22, 23, 24, 25, 26, 27, 28, 29, 30, 31, 32, 33, 34, 35, 36, 37, 38, 39, 40, 41, 42, 43, 44, 45, 46, 47, 48, 49, 50, 51, 52, 53, 54, 55, 56, 57, 58, 59, 60, 61, 62, 63, 64, 65, 66, 67, 68, 69, 70, 71, 72, 73, 74, 75, 76, 77, 78, 79, 80, 81, 82, 83, 84, 85, 86, 87, 88, 89, 90, 91, 92, 93, 94, 95, 96, 97, 98, 99, 100

1, 2, 3, 4, 5, 6, 7, 8, 9, 10, 11, 12, 13, 14, 15, 16, 17, 18, 19, 20, 21, 22, 23, 24, 25, 26, 27, 28, 29, 30, 31, 32, 33, 34, 35, 36, 37, 38, 39, 40, 41, 42, 43, 44, 45, 46, 47, 48, 49, 50, 51, 52, 53, 54, 55, 56, 57, 58, 59, 60, 61, 62, 63, 64, 65, 66, 67, 68, 69, 70, 71, 72, 73, 74, 75, 76, 77, 78, 79, 80, 81, 82, 83, 84, 85, 86, 87, 88, 89, 90, 91, 92, 93, 94, 95, 96, 97, 98, 99, 100

1, 2, 3, 4, 5, 6, 7, 8, 9, 10, 11, 12, 13, 14, 15, 16, 17, 18, 19, 20, 21, 22, 23, 24, 25, 26, 27, 28, 29, 30, 31, 32, 33, 34, 35, 36, 37, 38, 39, 40, 41, 42, 43, 44, 45, 46, 47, 48, 49, 50, 51, 52, 53, 54, 55, 56, 57, 58, 59, 60, 61, 62, 63, 64, 65, 66, 67, 68, 69, 70, 71, 72, 73, 74, 75, 76, 77, 78, 79, 80, 81, 82, 83, 84, 85, 86, 87, 88, 89, 90, 91, 92, 93, 94, 95, 96, 97, 98, 99, 100

1, 2, 3, 4, 5, 6, 7, 8, 9, 10, 11, 12, 13, 14, 15, 16, 17, 18, 19, 20, 21, 22, 23, 24, 25, 26, 27, 28, 29, 30, 31, 32, 33, 34, 35, 36, 37, 38, 39, 40, 41, 42, 43, 44, 45, 46, 47, 48, 49, 50, 51, 52, 53, 54, 55, 56, 57, 58, 59, 60, 61, 62, 63, 64, 65, 66, 67, 68, 69, 70, 71, 72, 73, 74, 75, 76, 77, 78, 79, 80, 81, 82, 83, 84, 85, 86, 87, 88, 89, 90, 91, 92, 93, 94, 95, 96, 97, 98, 99, 100

1, 2, 3, 4, 5, 6, 7, 8, 9, 10, 11, 12, 13, 14, 15, 16, 17, 18, 19, 20, 21, 22, 23, 24, 25, 26, 27, 28, 29, 30, 31, 32, 33, 34, 35, 36, 37, 38, 39, 40, 41, 42, 43, 44, 45, 46, 47, 48, 49, 50, 51, 52, 53, 54, 55, 56, 57, 58, 59, 60, 61, 62, 63, 64, 65, 66, 67, 68, 69, 70, 71, 72, 73, 74, 75, 76, 77, 78, 79, 80, 81, 82, 83, 84, 85, 86, 87, 88, 89, 90, 91, 92, 93, 94, 95, 96, 97, 98, 99, 100

1, 2, 3, 4, 5, 6, 7, 8, 9, 10, 11, 12, 13, 14, 15, 16, 17, 18, 19, 20, 21, 22, 23, 24, 25, 26, 27, 28, 29, 30, 31, 32, 33, 34, 35, 36, 37, 38, 39, 40, 41, 42, 43, 44, 45, 46, 47, 48, 49, 50, 51, 52, 53, 54, 55, 56, 57, 58, 59, 60, 61, 62, 63, 64, 65, 66, 67, 68, 69, 70, 71, 72, 73, 74, 75, 76, 77, 78, 79, 80, 81, 82, 83, 84, 85, 86, 87, 88, 89, 90, 91, 92, 93, 94, 95, 96, 97, 98, 99, 100

1, 2, 3, 4, 5, 6, 7, 8, 9, 10, 11, 12, 13, 14, 15, 16, 17, 18, 19, 20, 21, 22, 23, 24, 25, 26, 27, 28, 29, 30, 31, 32, 33, 34, 35, 36, 37, 38, 39, 40, 41, 42, 43, 44, 45, 46, 47, 48, 49, 50, 51, 52, 53, 54, 55, 56, 57, 58, 59, 60, 61, 62, 63, 64, 65, 66, 67, 68, 69, 70, 71, 72, 73, 74, 75, 76, 77, 78, 79, 80, 81, 82, 83, 84, 85, 86, 87, 88, 89, 90, 91, 92, 93, 94, 95, 96, 97, 98, 99, 100

1, 2, 3, 4, 5, 6, 7, 8, 9, 10, 11, 12, 13, 14, 15, 16, 17, 18, 19, 20, 21, 22, 23, 24, 25, 26, 27, 28, 29, 30, 31, 32, 33, 34, 35, 36, 37, 38, 39, 40, 41, 42, 43, 44, 45, 46, 47, 48, 49, 50, 51, 52, 53, 54, 55, 56, 57, 58, 59, 60, 61, 62, 63, 64, 65, 66, 67, 68, 69, 70, 71, 72, 73, 74, 75, 76, 77, 78, 79, 80, 81, 82, 83, 84, 85, 86, 87, 88, 89, 90, 91, 92, 93, 94, 95, 96, 97, 98, 99, 100

1, 2, 3, 4, 5, 6, 7, 8, 9, 10, 11, 12, 13, 14, 15, 16, 17, 18, 19, 20, 21, 22, 23, 24, 25, 26, 27, 28, 29, 30, 31, 32, 33, 34, 35, 36, 37, 38, 39, 40, 41, 42, 43, 44, 45, 46, 47, 48, 49, 50, 51, 52, 53, 54, 55, 56, 57, 58, 59, 60, 61, 62, 63, 64, 65, 66, 67, 68, 69, 70, 71, 72, 73, 74, 75, 76, 77, 78, 79, 80, 81, 82, 83, 84, 85, 86, 87, 88, 89, 90, 91, 92, 93, 94, 95, 96, 97, 98, 99, 100

1, 2, 3, 4, 5, 6, 7, 8, 9, 10, 11, 12, 13, 14, 15, 16, 17, 18, 19, 20, 21, 22, 23, 24, 25, 26, 27, 28, 29, 30, 31, 32, 33, 34, 35, 36, 37, 38, 39, 40, 41, 42, 43, 44, 45, 46, 47, 48, 49, 50, 51, 52, 53, 54, 55, 56, 57, 58, 59, 60, 61, 62, 63, 64, 65, 66, 67, 68, 69, 70, 71, 72, 73, 74, 75, 76, 77, 78, 79, 80, 81, 82, 83, 84, 85, 86, 87, 88, 89, 90, 91, 92, 93, 94, 95, 96, 97, 98, 99, 100

1, 2, 3, 4, 5, 6, 7, 8, 9, 10, 11, 12, 13, 14, 15, 16, 17, 18, 19, 20, 21, 22, 23, 24, 25, 26, 27, 28, 29, 30, 31, 32, 33, 34, 35, 36, 37, 38, 39, 40, 41, 42, 43, 44, 45, 46, 47, 48, 49, 50, 51, 52, 53, 54, 55, 56, 57, 58, 59, 60, 61, 62, 63, 64, 65, 66, 67, 68, 69, 70, 71, 72, 73, 74, 75, 76, 77, 78, 79, 80, 81, 82, 83, 84, 85, 86, 87, 88, 89, 90, 91, 92, 93, 94, 95, 96, 97, 98, 99, 100

1, 2, 3, 4, 5, 6, 7, 8, 9, 10, 11, 12, 13, 14, 15, 16, 17, 18, 19, 20, 21, 22, 23, 24, 25, 26, 27, 28, 29, 30, 31, 32, 33, 34, 35, 36, 37, 38, 39, 40, 41, 42, 43, 44, 45, 46, 47, 48, 49, 50, 51, 52, 53, 54, 55, 56, 57, 58, 59, 60, 61, 62, 63, 64, 65, 66, 67, 68, 69, 70, 71, 72, 73, 74, 75, 76, 77, 78, 79, 80, 81, 82, 83, 84, 85, 86, 87, 88, 89, 90, 91, 92, 93, 94, 95, 96, 97, 98, 99, 100

1, 2, 3, 4, 5, 6, 7, 8, 9, 10, 11, 12, 13, 14, 15, 16, 17, 18, 19, 20, 21, 22, 23, 24, 25, 26, 27, 28, 29, 30, 31, 32, 33, 34, 35, 36, 37, 38, 39, 40, 41, 42, 43, 44, 45, 46, 47, 48, 49, 50, 51, 52, 53, 54, 55, 56, 57, 58, 59, 60, 61, 62, 63, 64, 65, 66, 67, 68, 69, 70, 71, 72, 73, 74, 75, 76, 77, 78, 79, 80, 81, 82, 83, 84, 85, 86, 87, 88, 89, 90, 91, 92, 93, 94, 95, 96, 97, 98, 99, 100

1, 2, 3, 4, 5, 6, 7, 8, 9, 10, 11, 12, 13, 14, 15, 16, 17, 18, 19, 20, 21, 22, 23, 24, 25, 26, 27, 28, 29, 30, 31, 32, 33, 34, 35, 36, 37, 38, 39, 40, 41, 42, 43, 44, 45, 46, 47, 48, 49, 50, 51, 52, 53, 54, 55, 56, 57, 58, 59, 60, 61, 62, 63, 64, 65, 66, 67, 68, 69, 70, 71, 72, 73, 74, 75, 76, 77, 78, 79, 80, 81, 82, 83, 84, 85, 86, 87, 88, 89, 90, 91, 92, 93, 94, 95, 96, 97, 98, 99, 100

1, 2, 3, 4, 5, 6, 7, 8, 9, 10, 11, 12, 13, 14, 15, 16, 17, 18, 19, 20, 21, 22, 23, 24, 25, 26, 27, 28, 29, 30, 31, 32, 33, 34, 35, 36, 37, 38, 39, 40, 41, 42, 43, 44, 45, 46, 47, 48, 49, 50, 51, 52, 53, 54, 55, 56, 57, 58, 59, 60, 61, 62, 63, 64, 65, 66, 67, 68, 69, 70, 71, 72, 73, 74, 75, 76, 77, 78, 79, 80, 81, 82, 83, 84, 85, 86, 87, 88, 89, 90, 91, 92, 93, 94, 95, 96, 97, 98, 99, 100

1, 2, 3, 4, 5, 6, 7, 8, 9, 10, 11, 12, 13, 14, 15, 16, 17, 18, 19, 20, 21, 22, 23, 24, 25, 26, 27, 28, 29, 30, 31, 32, 33, 34, 35, 36, 37, 38, 39, 40, 41, 42, 43, 44, 45, 46, 47, 48, 49, 50, 51, 52, 53, 54, 55, 56, 57, 58, 59, 60, 61, 62, 63, 64, 65, 66, 67, 68, 69, 70, 71, 72, 73, 74, 75, 76, 77, 78, 79, 80, 81, 82, 83, 84, 85, 86, 87, 88, 89, 90, 91, 92, 93, 94, 95, 96, 97, 98, 99, 100

1, 2, 3, 4, 5, 6, 7, 8, 9, 10, 11, 12, 13, 14, 15, 16, 17, 18, 19, 20, 21, 22, 23, 24, 25, 26, 27, 28, 29, 30, 31, 32, 33, 34, 35, 36, 37, 38, 39, 40, 41, 42, 43, 44, 45, 46, 47, 48, 49, 50, 51, 52, 53, 54, 55, 56, 57, 58, 59, 60, 61, 62, 63, 64, 65, 66, 67, 68, 69, 70, 71, 72, 73, 74, 75, 76, 77, 78, 79, 80, 81, 82, 83, 84, 85, 86, 87, 88, 89, 90, 91, 92, 93, 94, 95, 96, 97, 98, 99, 100

1, 2, 3, 4, 5, 6, 7, 8, 9, 10, 11, 12, 13, 14, 15, 16, 17, 18, 19, 20, 21, 22, 23, 24, 25, 26, 27, 28, 29, 30, 31, 32, 33, 34, 35, 36, 37, 38, 39, 40, 41, 42, 43, 44, 45, 46, 47, 48, 49, 50, 51, 52, 53, 54, 55, 56, 57, 58, 59, 60, 61, 62, 63, 64, 65, 66, 67, 68, 69, 70, 71, 72, 73, 74, 75, 76, 77, 78, 79, 80, 81, 82, 83, 84, 85, 86, 87, 88, 89, 90, 91, 92, 93, 94, 95, 96, 97, 98, 99, 100

1, 2, 3, 4, 5, 6, 7, 8, 9, 10, 11, 12, 1



Tela de Filtros → Classificar por: Conta Patrimonial (Crescente)

[illegible]

Tratamento de Dados - Subtotais

Menu Dados → Subtotais

Microsoft Excel - lista_depreciada [Somente leitura]

Arquivo Editar Exibir Inserir Formatar Ferramentas

Dados Janela Ajuda

Classificar... Digite uma pergunta

Arial 10

100%

1

Subtotais...

Validação...

A1	UNIDADE ORÇAMENTÁRIA(C)										H	I	J	K	L	M	N	O	P
1	UNIDADE	UNIDADE	CÓDIGO	NÚMERO	CONTA PA		VALOR DE	VALOR AT	VALOR DE	VALOR DE	DEPRECIAC	VALOR DE	VALOR DE	VALOR DE	VALOR DE	VALOR DE	VALOR DE	VALOR DE	
2	26205	154069		B1005689	14212.04 C 26/1/2010	1	111	111	11,1	99,9	0,56	5,55	105,45	#####					
3	26205	154069		B1005689	14212.04 C 26/1/2010	1	111	111	11,1	99,9	0,56	5,55	105,45	#####					
4	26205	154069		B1005689	14212.04 C 26/1/2010	1	111	111	11,1	99,9	0,56	5,55	105,45	#####					
5	26205	154069		B1005690	14212.04 C 26/1/2010	1	111	111	11,1	99,9	0,56	5,55	105,45	#####					
6	26205	154069		B1005690	14212.04 C 26/1/2010	1	111	111	11,1	99,9	0,56	5,55	105,45	#####					
7	26205	154069		B1005690	14212.04 C 26/1/2010	1	111	111	11,1	99,9	0,56	5,55	105,45	#####					
8	26205	154069		B1005690	14212.04 C 26/1/2010	1	111	111	11,1	99,9	0,56	5,55	105,45	#####					
9	26205	154069		B1005690	14212.04 C 26/1/2010	1	111	111	11,1	99,9	0,56	5,55	105,45	#####					
10	26205	154069		B1005690	14212.04 C 26/1/2010	1	111	111	11,1	99,9	0,56	5,55	105,45	#####					
11	26205	154069		B1005690	14212.04 C 26/1/2010	1	111	111	11,1	99,9	0,56	5,55	105,45	#####					
12	26205	154069		A1005690	14212.04 C 20/1/2010	1	49,66	49,66	4,97	44,69	0,25	2,48	47,18	#####					
13	26205	154069		A1005690	14212.04 C 20/1/2010	1	49,66	49,66	4,97	44,69	0,25	2,48	47,18	#####					
14	26205	154069		A1005690	14212.04 C 20/1/2010	1	49,66	49,66	4,97	44,69	0,25	2,48	47,18	#####					
15	26205	154069		A1005753	14212.04 C 30/1/2010	1	874,5	874,5	87,45	787,05	4,37	39,35	835,15	#####					
16	26205	154069		A1005753	14212.04 C 30/1/2010	1	874,5	874,5	87,45	787,05	4,37	39,35	835,15	#####					
17	26205	154069		B1005685	14212.04 C 22/1/2010	1	128	128	12,8	115,2	0,64	6,4	121,6	#####					
18	26205	154069		B1005685	14212.04 C 22/1/2010	1	128	128	12,8	115,2	0,64	6,4	121,6	#####					
19	26205	154069		B1005685	14212.04 C 22/1/2010	1	128	128	12,8	115,2	0,64	6,4	121,6	#####					
20	26205	154069		A1005700	14212.04 C 27/1/2010	1	96,8	96,8	9,68	87,12	4,84	4,84	91,96	#####					
21	26205	154069		A1005700	14212.04 C 27/1/2010	1	96,8	96,8	9,68	87,12	4,84	4,84	91,96	#####					
22	26205	154069		A1005700	14212.04 C 27/1/2010	1	96,8	96,8	9,68	87,12	4,84	4,84	91,96	#####					
23	26205	154069		A1005700	14212.04 C 27/1/2010	1	96,8	96,8	9,68	87,12	4,84	4,84	91,96	#####					
24	26205	154069		A1005700	14212.04 C 27/1/2010	1	96,8	96,8	9,68	87,12	4,84	4,84	91,96	#####					
25	26205	154069		A1005700	14212.04 C 27/1/2010	1	96,8	96,8	9,68	87,12	4,84	4,84	91,96	#####					
26	26205	154069		A1005700	14212.04 C 27/1/2010	1	96,8	96,8	9,68	87,12	4,84	4,84	91,96	#####					
27	26205	154069		A1005700	14212.04 C 27/1/2010	1	96,8	96,8	9,68	87,12	4,84	4,84	91,96	#####					
28	26205	154069		A1005701	14212.04 C 27/1/2010	1	96,8	96,8	9,68	87,12	4,84	4,84	91,96	#####					
29	26205	154069		A1005701	14212.04 C 27/1/2010	1	96,8	96,8	9,68	87,12	4,84	4,84	91,96	#####					
30	26205	154069		B1005747	14212.04 C 30/1/2010	1	129,95	129,95	13	116,96	0,65	5,85	124,1	#####					
31	26205	154069		B1005747	14212.04 C 30/1/2010	1	129,95	129,95	13	116,96	0,65	5,85	124,1	#####					

Desenhar AutoFormas

Pronto

17:00

terça-feira

Tela de Filtros →

1 – A cada alteração em: Conta Patrimonial

2 – Usar função: Soma

3 – Adicionar subtotais a: Depreciação do Mês Corrente

Manter selecionados: Substituir subtotais atuais e Resumir abaixo dos dados

4 – Clicar no Botão “Ok”

The screenshot shows a Microsoft Excel window titled 'Microsoft Excel - lista_depreciada [Somente leitura]'. The main data table has columns A through O. A 'Subtotais' dialog box is open, showing the following settings:

- A cada alteração em:** CONTA PATRIMONIAL (1)
- Usar função:** Soma (2)
- Adicionar subtotal a:** DEPRECIÇÃO DO MÊS CORRENTE (3)
- ☒ Substituir subtotais atuais
- ☐ Quebra de página entre grupos
- ☒ Resumir abaixo dos dados (4)
- OK** button is highlighted.

The background table contains data with columns: UNIDADE, UNIDADE, CÓDIGO, NÚMERO, CONTA, P, DATA DE, QUANTIDADE, VALOR DE, VALOR AT, VALOR RE, VALOR DE, DEPRECI, DEPRECI, VALOR LI, DATA DE, ME.



Tratamento de Dados – Congelar painéis

Menu Janela → Congelar painéis

Microsoft Excel - lista_depreciada [Somente leitura]

ArquivoEditarExibirInserirFormatarFerramentasDadosJanelaAjuda

Congelar painéis

100%

1 lista_depreciada

A226285

1	UNIDADE	UNIDADE	CÓDIGO	NÚMERO	CONTA PATRIMONIAL	DATA DE	QUANTIDADE	VALOR DE	VALOR AT	VALOR RE	VALOR DE DEPRECIAC	DEPRECIAC	VALOR LIQ	DATA	
2	26285	154069	B1005689	14212.04	C	26/1/2010	1	111	111	11,1	99,9	0,56	5,55	105,45	####
3	26285	154069	B1005689	14212.04	C	26/1/2010	1	111	111	11,1	99,9	0,56	5,55	105,45	####
4	26285	154069	B1005689	14212.04	C	26/1/2010	1	111	111	11,1	99,9	0,56	5,55	105,45	####
5	26285	154069	B1005690	14212.04	C	26/1/2010	1	111	111	11,1	99,9	0,56	5,55	105,45	####
6	26285	154069	B1005690	14212.04	C	26/1/2010	1	111	111	11,1	99,9	0,56	5,55	105,45	####
7	26285	154069	B1005690	14212.04	C	26/1/2010	1	111	111	11,1	99,9	0,56	5,55	105,45	####
8	26285	154069	B1005690	14212.04	C	26/1/2010	1	111	111	11,1	99,9	0,56	5,55	105,45	####
9	26285	154069	B1005690	14212.04	C	26/1/2010	1	111	111	11,1	99,9	0,56	5,55	105,45	####
10	26285	154069	B1005690	14212.04	C	26/1/2010	1	111	111	11,1	99,9	0,56	5,55	105,45	####
11	26285	154069	B1005690	14212.04	C	26/1/2010	1	111	111	11,1	99,9	0,56	5,55	105,45	####
12	26285	154069	A1005650	14212.04	C	20/1/2010	1	49,66	49,66	4,97	44,69	0,25	2,48	47,18	####
13	26285	154069	A1005650	14212.04	C	20/1/2010	1	49,66	49,66	4,97	44,69	0,25	2,48	47,18	####
14	26285	154069	A1005650	14212.04	C	20/1/2010	1	49,66	49,66	4,97	44,69	0,25	2,48	47,18	####
15	26285	154069	A1005733	14212.04	C	30/1/2010	1	874,5	874,5	87,45	787,05	4,37	39,35	835,15	####
16	26285	154069	A1005733	14212.04	C	30/1/2010	1	874,5	874,5	87,45	787,05	4,37	39,35	835,15	####
17	26285	154069	B1005685	14212.04	C	22/1/2010	1	128	128	12,8	115,2	0,64	6,4	121,6	####
18	26285	154069	B1005685	14212.04	C	22/1/2010	1	128	128	12,8	115,2	0,64	6,4	121,6	####
19	26285	154069	B1005685	14212.04	C	22/1/2010	1	128	128	12,8	115,2	0,64	6,4	121,6	####
20	26285	154069	A1005700	14212.04	C	27/1/2010	1	96,8	96,8	9,68	87,12	0,48	4,84	91,96	####
21	26285	154069	A1005700	14212.04	C	27/1/2010	1	96,8	96,8	9,68	87,12	0,48	4,84	91,96	####
22	26285	154069	A1005700	14212.04	C	27/1/2010	1	96,8	96,8	9,68	87,12	0,48	4,84	91,96	####
23	26285	154069	A1005700	14212.04	C	27/1/2010	1	96,8	96,8	9,68	87,12	0,48	4,84	91,96	####
24	26285	154069	A1005700	14212.04	C	27/1/2010	1	96,8	96,8	9,68	87,12	0,48	4,84	91,96	####
25	26285	154069	A1005700	14212.04	C	27/1/2010	1	96,8	96,8	9,68	87,12	0,48	4,84	91,96	####
26	26285	154069	A1005700	14212.04	C	27/1/2010	1	96,8	96,8	9,68	87,12	0,48	4,84	91,96	####
27	26285	154069	A1005700	14212.04	C	27/1/2010	1	96,8	96,8	9,68	87,12	0,48	4,84	91,96	####
28	26285	154069	A1005701	14212.04	C	27/1/2010	1	96,8	96,8	9,68	87,12	0,48	4,84	91,96	####
29	26285	154069	A1005701	14212.04	C	27/1/2010	1	96,8	96,8	9,68	87,12	0,48	4,84	91,96	####
30	26285	154069	B1005747	14212.04	C	30/1/2010	1	129,95	129,95	13	116,96	0,65	5,95	124,1	####
31	26285	154069	B1005747	14212.04	C	30/1/2010	1	129,95	129,95	13	116,96	0,65	5,95	124,1	####

DesenharAutoFormas

Mostra Fei

Downloads

Microsoft Excel - lista...

Lista Depreciada - Excel...

17:03

terça-fei

Visualização dos Subtotais por Conta Patrimonial

Microsoft Excel - lista_depreciada [Somente leitura]																	
Arquivo Editar Exibir Inserir Formatar Ferramentas Dados Janela Ajuda																	
Digite uma pergunta																	
100%																	
Arial 10																	
A76 26285																	
1	2	3	A	B	C	D	E	F	G	H	I	J	K	L	M	N	O
1	UNIDADE	UNIDADE	CÓDIGO	NÚMERO	CONTA PATRIMONIAL	DATA DE	QUANTIDADE	VALOR DE	VALOR AT	VALOR RE	VALOR DE DEPRECIAC	DEPRECIAC	VALOR LIQ	DATA			
66	26285	154069	A1005757	14212.04	C	30/1/2010	1	596,5	596,5	59,65	536,85	2,98	26,84	569,66	####		
67	26285	154069	A1005757	14212.04	C	30/1/2010	1	596,5	596,5	59,65	536,85	2,98	26,84	569,66	####		
68	26285	154069	A1005734	14212.04	C	28/1/2010	1	485,8	485,8	48,58	437,22	2,43	24,29	461,51	####		
69	26285	154069	A1005734	14212.04	C	28/1/2010	1	600	600	60	540	3	30	570	####		
70	26285	154069	A1005734	14212.04	C	28/1/2010	1	600	600	60	540	3	30	570	####		
71	26285	154069	A1005689	14212.04	C	26/1/2010	1	1898	1898	189,8	1708,2	9,49	94,9	1803,1	####		
72	26285	154069	A1005746	14212.04	C	28/1/2010	1	190	190	19	171	0,95	9,5	180,5	####		
73	26285	154069	A1005746	14212.04	C	28/1/2010	1	209	209	20,9	188,1	1,05	10,45	198,55	####		
74	26285	154069	A1005757	14212.04	C	30/1/2010	1	50000	50000	5000	45000	250	2250	47750	####		
75	26285	154069	A1005689	14212.04	C	26/1/2010	1	29000	29000	2900	26100	145	1450	27550	####		
76	26285	154069	A1005758	14212.04	C	30/1/2010	1	830	830	83	747	4,15	37,35	792,65	####		
77	26285	154069		14212.04.00	Total							678,7					
78	26285	154069	A1005755	14212.06	C	30/1/2010	1	236,49	236,49	47,3	189,19	1,58	14,19	222,3	####		
79	26285	154069	A1005755	14212.06	C	30/1/2010	1	236,49	236,49	47,3	189,19	1,58	14,19	222,3	####		
80	26285	154069	A1005755	14212.06	C	30/1/2010	1	236,49	236,49	47,3	189,19	1,58	14,19	222,3	####		
81	26285	154069	A1005756	14212.06	C	30/1/2010	1	236,49	236,49	47,3	189,19	1,58	14,19	222,3	####		
82	26285	154069	A1005756	14212.06	C	30/1/2010	1	236,49	236,49	47,3	189,19	1,58	14,19	222,3	####		
83	26285	154069	A1005756	14212.06	C	30/1/2010	1	236,49	236,49	47,3	189,19	1,58	14,19	222,3	####		
84	26285	154069	A1005756	14212.06	C	30/1/2010	1	236,49	236,49	47,3	189,19	1,58	14,19	222,3	####		
85	26285	154069	A1005756	14212.06	C	30/1/2010	1	236,49	236,49	47,3	189,19	1,58	14,19	222,3	####		
86	26285	154069	A1005756	14212.06	C	30/1/2010	1	236,49	236,49	47,3	189,19	1,58	14,19	222,3	####		
87	26285	154069	A1005756	14212.06	C	30/1/2010	1	236,49	236,49	47,3	189,19	1,58	14,19	222,3	####		
88	26285	154069	B1005758	14212.06	C	30/1/2010	1	3580	3580	716	2864	23,87	214,8	3365,2	####		
89	26285	154069	B1005758	14212.06	C	30/1/2010	1	3580	3580	716	2864	23,87	214,8	3365,2	####		
90	26285	154069	A1005657	14212.06	C	21/1/2010	1	40,83	40,83	8,17	32,66	0,27	2,72	38,11	####		
91	26285	154069	A1005657	14212.06	C	21/1/2010	1	40,83	40,83	8,17	32,66	0,27	2,72	38,11	####		
92	26285	154069	A1005657	14212.06	C	21/1/2010	1	40,83	40,83	8,17	32,66	0,27	2,72	38,11	####		
93	26285	154069	A1005657	14212.06	C	21/1/2010	1	40,83	40,83	8,17	32,66	0,27	2,72	38,11	####		
94	26285	154069	A1005657	14212.06	C	21/1/2010	1	40,83	40,83	8,17	32,66	0,27	2,72	38,11	####		
95	26285	154069	A1005657	14212.06	C	21/1/2010	1	40,83	40,83	8,17	32,66	0,27	2,72	38,11	####		

Desenhar

Autoformas



Coordenação-Geral de
Finanças

Subsecretaria
de Planejamento e

Ministério
da Educação

